

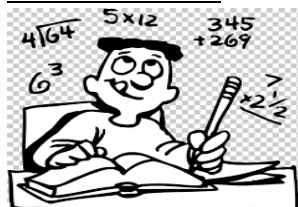
Parent Communication: Term 4 Week 11



Dear Parents and Carers

Just a couple of last-minute reminders and information before we head into the Christmas break.

MAI Assessments



Monday 31 January 2022 has been put aside to hold assessments prior to school commencing. Although not every student will be able to have their interview on that day, we hope to hold as many as possible, and reduce the need to run these during class time.

We urge parents to book an interview time, please [click here](#) to book.

Parent Teacher Interviews



Please be advised that your one-on-one parent teacher meeting will occur in the week beginning Monday 7 February 2022. A communication will be sent to parents in the first week of classes next year to allow you to book in a time for your conference.

*It may be a little confusing regarding school weeks at the start of next year. Teachers are officially returning on Friday 28 January 2022, which the DBB is deeming as **Week 1**. Students will actually begin classes in what will be **Week 2**. We will remind you at the start of the year again regarding this and hopefully we will all be on the same page regarding school weeks for the term.*

Key Dates To Note

Friday 28 January	Staff Return MAI Assessments begin
Monday 31 January	MAI Assessments continue
Tuesday 1 February	All students K-6 begin classes

Years 1 – 5: 8.35am to 3.00pm

Kindergarten: 9.30am to 2.30pm

Kindergarten to attend normal times from next week

I wish all families in our school and Parish community, a very happy and holy Christmas. We look forward to seeing everyone in the new year when we do it all again!

Merry Christmas!

John Barton

Principal

